

TUMBLE DRYERS

WHEN INVESTING MEANS SAVING

DD45 GOLD
DD60 GOLD
DD80 GOLD

FEATURES

- Construction in grey skinplate, stainless steel look.
- Big loading door (opening of 180°).
- Transmission by pulley and belt, with inverter.
- Front subjection by 2 strong and high-resistant wheels.
- ENERGY SAVINGS: Air recovery system for great energy efficiency.
- CARE DRY: The intelligent humidity sensor offers a precise control of the moisture in the linen. By this system the drying cycle will automatically stop when it reaches the set level of residual moisture.
- INSULATED PANELS & DOUBLE DOOR GLASS: The complete circuit of the air-flow has been thermally insulated in order to optimize the energy to heat the air and to maximize the energy efficiency. Double doorglass.
- OPTIMAL FLOW: The range of GOLD dryers complements the axial-radial air flow with side and front openings to increase and optimize the airflow circuit, achieving the most efficient drying conditions.
- SPRINKLER: Integrated Fire Extinguishing System.
- ELECTRONIC CONTROL: Easy and intuitive to use, the electronic control offers a complete control of the process.
- REVERSING DRUM: All models offer the reverse turning of the drum.
- STAINLESS STEEL DRUM standard.
- GENTLE DRY: The new drum with stamped holes makes sure the linen is gently handled.
- New filter drawer with wide surface and improved airflow.
- Cool Down: Anti-wrinkle at the end of cycle.
- Models available in electric, gas or steam heating.



OPTIONS

- Stainless steel body.
- Stainless steel front panel.
- Low pressure steam battery.
- Model versions in 60 Hz.
- Marine versions 440V III 50/60 Hz No neutral or 480V III 50/60 Hz No neutral.



Air recylé



Contrôle de l'humidité
et réglage automatique
du tambour



Carrosserie isolée



Double flux
Axial & Radial

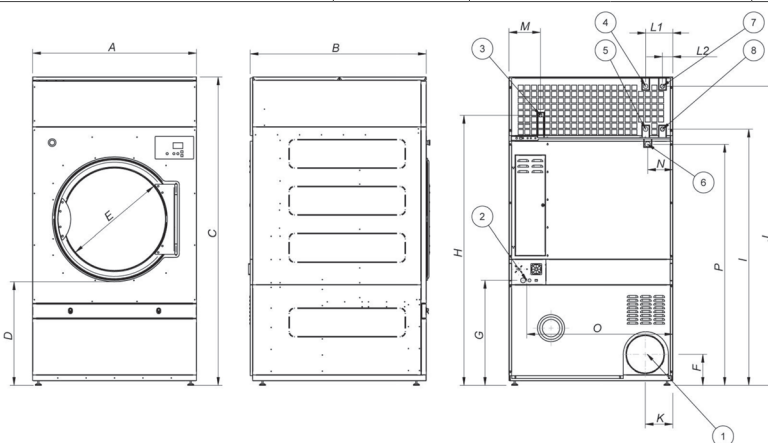


Système
anti-feu



Hublot
double vitrage

TECHNICAL DATA	UNIT.	DD45 GOLD	DD60 GOLD	DD80 GOLD			
CAPACITY							
Capacity 1/18	Kg	50	67	83			
Capacity 1/20	Kg	45	60	75			
Hourly Output GOLD	Kg/h	117	156	195			
Evaporation capacity GOLD	l/h	60,6	81,2	99,7			
DRUM							
Ø Drum	mm	1.225	1.225	1.225			
Ø Door	mm	802	802	802			
Door center height	mm	1.275	1.275	1.275			
Load hole bottom height	mm	874	874	874			
Drum length	mm	760	1.020	1.252			
Drum volume	l	896	1.202	1.500			
POWER							
Drum motor power	Kw	0,75	1,1	1,5			
Fan Motor Power GOLD	Kw	2,2	2,2	2,2			
Total Installed power GOLD	Kw	57	75,35	75,75			
Electric Heating (Installed power)	Kw	54	72	72			
Gas heating (installed Power) in KW	Kw	60	90	120			
Gas heating (installed el. power) GOLD	Kw	3	3,35	3,75			
Steam heating (Steam Power KW)	Kw	91,3	128	128			
Steam heating (installed el. power) GOLD	Kw	3	3,35	3,75			
CONNECTIONS							
		ELECTRICAL	STEAM / GAS	ELECTRICAL	STEAM / GAS	ELECTRICAL	STEAM / GAS
Tension 230V - I + T	Nº x mm2 / A	-	-	-	-	-	-
Tension 230V - III + T	Nº x mm2 / A	-	4 x 1,5 / 20A	-	4 x 1,5 / 32A	-	4 x 1,5 / 32A
Tension 400V - III + N + T	Nº x mm2 / A	5 x 35 / 100A	5 x 1,5 / 20A	5 x 50 / 125A	5 x 1,5 / 32A	5 x 50 / 125A	5 x 1,5 / 32A
Ø Gas inlet	BSP	3/4"		3/4"		3/4"	
Ø Steam inlet	BSP	1"		1"		1"	
Ø Condensed (Steam models)	BSP	1"		1"		1"	
DIMENSIONS / PACKING DIMENSIONS							
Width / Width	mm	1.270/1.330		1.270/1.330		1.270/1.330	
Depth / Depth	mm	1.085/1.185		1.345/1.445		1.577/1.677	
Height / Height	mm	2.380/2.085		2.380/2.085		2.380/2.085	
Height without heating battery	mm	1.950		1.950		1.950	
Net weight / Gross weight	Kg	395/430		529/575		657/715	
OTHERS							
Max airflow GOLD	m3/h	4.500		4.500		4.500	
Ø Fume exhaust	mm	300		300		300	
Sound level GOLD	dB	67		67		67	



- 01. Fumes outlet
- 02. Electrical connection
- 03. Gas connection
- 04. Steam connection DD45
- 05. Condensation outlet DD45
- 06. Anti fire water valve
- 07. Steam connection DD60-80
- 08. Condensation outlet DD60-80

	A	B	C	D	E	F	G	H	I	J	K	L1	L2	M	N	O	P
DD45	1.270	1.085	2.380	813	802	240	813	2.088	1.981	2.314	214	211	-	244	195	1.132	1.865
DD60	1.270	1.345	2.380	813	802	240	813	2.088	1.981	2.314	214	-	80	244	195	1.132	1.865
DD80	1.270	1.577	2.380	813	802	240	813	2.088	1.981	2.314	214	-	80	244	195	1.132	1.865