

AQUABAC RECOVERY TANKS

WREC 80
WREC 150



EFFICIENCY

- Up to 70 % water savings,
- Chemical savings,
- Heat recovery system : using heated water coming from heat pump dryers or coming from a previous washing cycle.



EASY INSTALLATION & MAINTENANCE

- Plug and play,
- Small space required,
- Self cleaning of tanks with preset programs (with washers equipped with ET2 control),
- Tanks easy to remove and clean,
- Water filtering system between the 2sd drain of the washer and tanks.

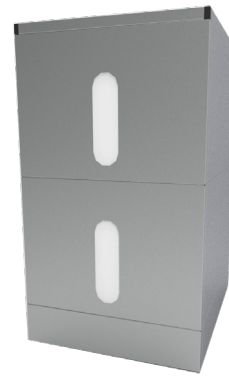


OTHERS

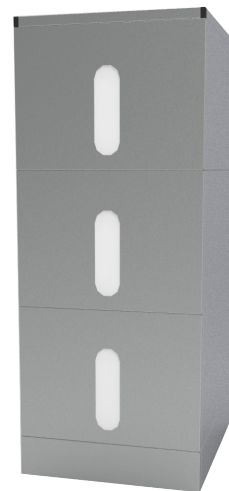
- 1, 2 or 3 tanks,
- Panels in grey skinplate,
- Tanks in high density polyethylene,
- 2 water level sensors in each tank.



WREC-80*1



WREC-80*2



WREC-80*3

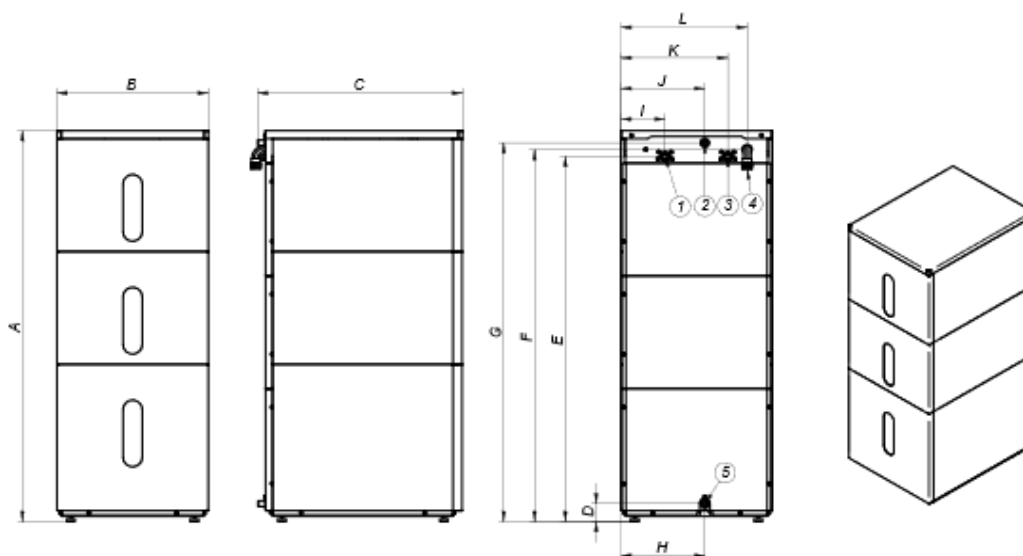


OPTIONS

- Panels in AISI-304 stainless steel.

TECHNICAL DATA	UNIT.	WREC-80*1	WREC-80*2	WREC-80*3	WREC-150*1	WREC-150*2	WREC-150*3
TANKS							
Tanks	Lts	80*1	80*2	80*3	150*1	150*2	150*3
Capacity to work with :							
- washers	kg	11, 14, 18	11, 14, 18	11, 14, 18	27, 36	27, 36	27, 36
- Barrier washers		16, 22	16, 22	16,22	27, 35	27,35	27,35
External panels	-	skinplate	skinplate	skinplate	skinplate	skinplate	skinplate
Tanks material	-	polyethylene	polyethylene	polyethylene	polyethylene	polyethylene	polyethylene
CONNECTIONS							
Water intake	inch	3/4	3/4	3/4	3/4	3/4	3/4
Water outlet	inch	3/4	3/4	3/4	3/4	3/4	3/4
Fumes exhaust Ø	mm	21	21	21	21	21	21
Overflow / drain Ø	mm	21	21	21	21	21	21
DIMENSIONS / PACKING DIMENSIONS							
Width / Width	mm	551 / 600	551 / 600	551 / 600	551 / 600	551 / 600	551 / 600
Depth / Depth	mm	752 / 800	752 / 800	752 / 800	1.302 / 1.350	1.302 / 1.350	1.302 / 1.350
Height / Height	mm	575 / 720	977 / 1.122	1.379 / 1.524	575 / 720	977 / 1.122	1.379 / 1.524
Net weight / Gross weight	kg	55 / 75	90 / 115	125 / 155	65 / 85	110 / 135	145 / 175

01. Condens. to washer
02. Fumes exhaust
03. Cond. from drain
04. Electric connection
05. Overflow drain



	A	B	C	D	E	F	G	H	I	J	K	L
WREC-80*1	607	551	770	66	515	540	565	305	161	305	390	460
WREC-80*2	1022	551	770	66	930	955	980	305	161	305	390	460
WREC-80*3	1438	551	770	66	135	1370	1395	305	161	305	390	460
WREC-150*1	607	551	1320	66	515	540	565	305	161	305	390	460
WREC-150*2	1022	551	1320	66	930	955	980	305	161	305	390	460
WREC-150*3	1438	551	1320	66	1345	1370	1395	305	151	305	1390	460

<https://www.danube-romania.ro>
office@danube-romania.ro

